

HIGH CURRENT POWER INDUCTORS / THT TYPE

FEATURES

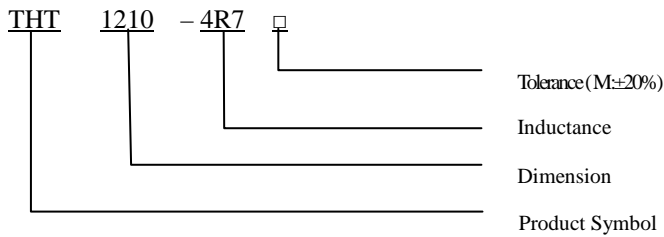
- ◆ High current
- ◆ High energy storage and low DCR.



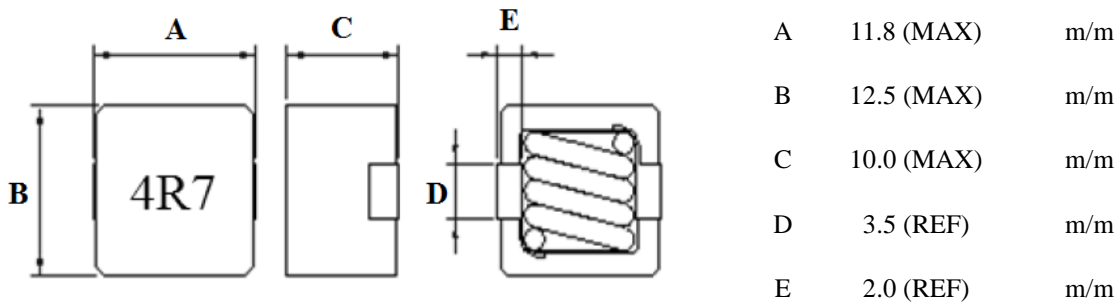
APPLICATIONS

- ◆ PDA / Notebook / Desktop, and server applications.
- ◆ DC/DC converters in distributed power systems.
- ◆ DC/DC converter for Field Programmable Gate Array(FPGA).

ORDERING CODE



DIMENSIONS (UNIT: mm)



HIGH CURRENT POWER INDUCTORS / THT TYPE

ELECTRICAL CHARACTERISTICS FOR THT1210

Part No.	Inductance (uH)	Test Frequency	RDC (mΩ) MAX	IDC (A) MAX
THT1210-R22M	0.22	100KHz/0.1V	0.58	60.0
THT1210-R33M	0.33	100KHz/0.1V	0.62	55.0
THT1210-R47M	0.47	100KHz/0.1V	0.79	48.0
THT1210-R68M	0.68	100KHz/0.1V	0.85	38.0
THT1210-R82M	0.82	100KHz/0.1V	1.36	36.0
THT1210-1R0M	1.00	100KHz/0.1V	1.48	32.0
THT1210-1R5M	1.50	100KHz/0.1V	2.31	27.0
THT1210-2R2M	2.20	100KHz/0.1V	3.36	23.0
THT1210-3R3M	3.30	100KHz/0.1V	5.84	20.0
THT1210-4R7M	4.70	100KHz/0.1V	7.99	17.0
THT1210-6R8M	6.80	100KHz/0.1V	11.20	13.0
THT1210-8R2M	8.20	100KHz/0.1V	13.50	12.0
THT1210-100M	10.0	100KHz/0.1V	15.84	10.0

CORE MASTER ENTERPRISE CO., LTD.

<http://www.coremaster.com.tw>

